

Funky Corner



Jewellery,
arts, craft & gifts,
groovy tribal &
bohemian wear

Crystals &
quality opals

1/46 Cullen St., Nimbin 2480 Ph: 0490 085 693

BARCOO PLUMBING
PLUMBING • DRAINAGE • GASFITTING

24/7 SERVICES
LIC NO. 320695C

IAN HARDIE
0427 445 555

GENERAL PLUMBING & MAINTENANCE • BLOCKED DRAINS
BATHROOM & KITCHEN RENOVATIONS • RAINWATER TANKS & PUMPS
ROOFING & GUTTERING • GAS INSTALLATIONS & REPAIRS
ONSITE SEWERAGE SYSTEM DESIGN • HOT WATER SERVICES


barcooplumbing@bigpond.com | barcooplumbingservices.com | f @

Jayne E. Alleman
Adv.Dip.Acc., Dip.Acc., Tax Agent 98777003

12 years experience

BAS electronically
lodged with
MYOB/
Quickbooks
(including cloud-based versions)

Phone 0457-497-011
Email: jayne@nimbintax.com.au



NIMBIN NUMBERS

Sunsparks Electrics
Solar Power Professionals



Design, sale and installation
of solar power systems

16 years specialisation in renewables,
grid connect or stand alone power systems

Shannon Lacy
Phone 6679 7167 or Mobile 0418 228 117

sunsparkselectrics@gmail.com
www.sunsparks.com.au

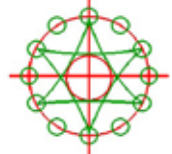
NIM-FM 102.3

NIMBIN NEWSAGENCY
FOR ALL YOUR EVERYDAY NEEDS

Toys
EFTPOS
Art Supplies
Local Postcards
Everyday
Groceries
Office and
School needs
Newspapers
and Magazines
Prepaid Phone
and Internet credit



NIMBIN LAW
Solicitors, Barristers &
Conveyancers



Highly competitive rates
Extensive experience in
many areas, including:

- Conveyancing, Property & Family Law
- Wills, Estates, Probate

Web: www.nimbinlaw.com.au
Email: nimlaw@spains.com.au

**50C Cullen St.
Nimbin 2480**
(at rear)
Ph: 02 6689-1003

Business buoyed by local support

Being a tourist town, businesses in Nimbin have been hit hard by the Covid pandemic with international tourism at a standstill and weekend visits from Queenslanders off the agenda for the time being.

But many local shops are resilient and report they are staying afloat thanks to ongoing support from local residents.

"It's been hard and trade has certainly slowed down, but locals have been very supportive," Rachael from Armonica told the *Nimbin GoodTimes*.

"It's up and down and hard to predict from day to day, which makes ordering stock and rostering staff a balancing act, especially with the very real threat of another lockdown always looming over our heads" she said.

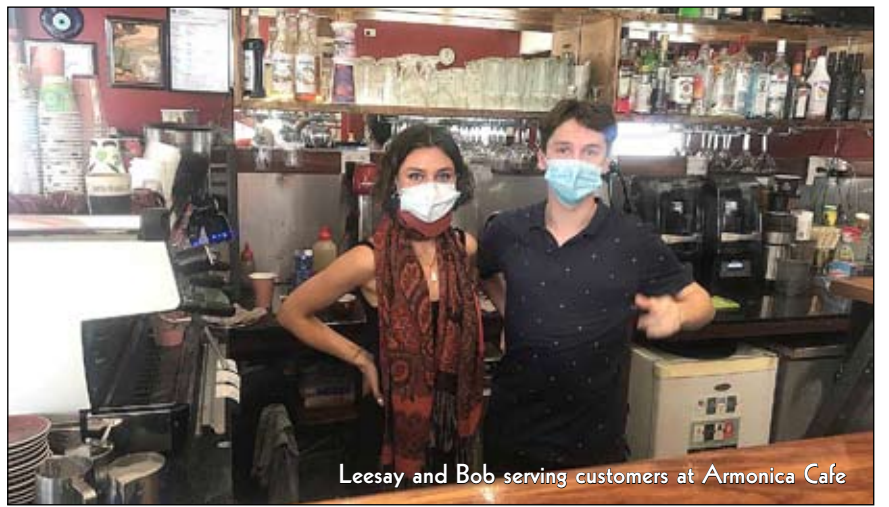
"Some days are busier than others and in fact there were occasions during the lockdown when we were very busy thanks to the popularity of take-aways."

Armonica's barista, Leesay said, "I felt sorry for the Bush Theatre, who spent a fortune stocking up on food and then the lockdown was announced the same day."

But one local business owner isn't letting a little inconvenience like a global pandemic get in the way of her vision, and she is no stranger to adversity.

Jodee Tichborne, who was the owner of the Rainbow Café (which burned down in 2014) and has been running Pot o' Gold for several years, has now leased the currently newspaper-clad premises next door (formerly Dutch & Co). She plans on calling it the Nimbin Aquarius Café.

"I want to create a place with a vibe like the old Rainbow, where I hope all locals will feel welcome," Jodee told NGT.



Leesay and Bob serving customers at Armonica Cafe



New plans afoot for the old Dutch & Co premises

The menu is a closely guarded secret at the moment, but Jodee said that she plans to have a large mural on the interior wall which she says will feature black and white photos of iconic Nimbin identities.

She's open to suggestions as to who should be featured, and contributions of

photos, and said that it may be a project that evolves over time.

"The tourists will come and go, and they are always very welcome, but my businesses have always been mainly supported by the locals and it's the locals that I want to support in return," Jodee said.

Ups and downs for School of Arts

by David Hallett

The ups-and-downs year continues at the Nimbin School of Arts, with many events cancelled but some still planned to go ahead.

Sadly, the Spring Arts Exhibition has been cancelled for the first time in more than 30 years. Recent lockdowns have disrupted the exhibition plans and promotion.

Also the November 6 Blue Moon Cabaret has been cancelled due to the strict on-going social distancing rules which have affected most performance events at Nimbin Hall. The next Blue Moon Cabaret is planned for Saturday 19th March 2022.

In more positive news, this year's Nimbin Performance

Poetry World Cup will be contested at the School of Arts on Saturday 30th and Sunday 31st October. And following on from the successful and popular Summer Art Exhibition, which was held for the first time early this year, another Summer Art Exhibition is planned at the School of Arts to open on New Year's Day.

The exhibition will be open to more artists this time, and will be open daily for over two weeks. Registration forms for the exhibition will be available at Perceptio Bookshop and Nimbin Artists Gallery in mid-October. For further information phone 6689-1577 or email: nimbinschoolofarts@gmail.com

Pool stays closed

Sadly the Nimbin Pool will remain closed during September school holidays as Lismore City Council works to comply with Covid Public Health Orders put in place by the NSW Government.

The pool is unable to be opened under the current restrictions as Council must have people on site at the free pool to monitor Covid safety measures during opening hours.

Council is currently working with the Nimbin Neighbourhood and Information Centre and Friends of Nimbin Pool to establish a volunteer roster and provide training so the pool can open with the help of community volunteers.

"We need to work through some complex logistics and unfortunately we will not have this complete in time to


open before the end of the September school holidays," Council's assets manager Scott Turner said.

"While we understand this is disappointing for the community, it is essential that we follow the Covid Public Health Orders set down by the NSW Government and find a solution that we can implement permanently over the summer months."

Council will provide a further update about the Nimbin Pool in early October but anticipate the pool to be opened towards the end of October dependent on what restrictions are in place.

Anyone interested in signing up to volunteer should email Friends of Nimbin Pool at: friendsofnimbinpool@gmail.com

DIGWISE EARTHWORKS



0403-721-876
brett@digwise.com.au
www.digwise.com.au

- Rural roads & driveways
- Dam building & clean outs
- Wastewater systems
- House & shed cuts
- Underground services
- Horse arenas
- Turf prep
- Trenching and drainage
- Stump grinding
- 3 x Excavators
- Posi tracks (bobcats)
- 2 x graders
- Rollers
- Water truck
- Tipper
- Float and more



Extinction Rebellion protest action at Lismore NAB branch

The National Australia Bank has lent \$7 billion to fossil fuel companies over the last five years, greatly contributing to global heating, extreme weather events and our dangerously unstable climate. Extinction Rebellion Lismore and supporters protested against this at NAB's Woodlark Street branch on 14th September. The theatrical and colourful event informed bank staff and the public about the consequences of the irresponsibility of NAB investments. Daisy Nutty was recently arrested in Canberra for disruptive activities in the widely publicised 'Duty of Care' campaign. She said, "We are everyday

people standing up for the planet. We are reaching the end game and it's time to do whatever we can to protect our future. "NAB has recently made a number of terrible decisions to increase its support of massive fossil fuel projects. In September, they are releasing their new Oil and Gas Policy, which presents a great opportunity to build pressure on key decision-makers," she said. This year NAB stepped in to finance the world's biggest coal port, Newcastle after ANZ pulled out, and they are also supporting the most polluting fossil fuel project ever attempted in Australia, Woodside's Burrup Hub in WA.

NAB's CEO Ross McEwan said the bank will be "measuring ourselves against" the International Energy Agency's Net Zero by 2050 report, and that would mean completely withdrawing support from any fossil fuels. Ms Nutty said, "We are asking the staff to put pressure on their employers to address the climate crisis and divest from fossil fuels. "We are asking NAB customers to also put pressure on their bank to stop their money from destroying the planet, and consider moving their custom to a more ethical bank, which is none of the big four."

Current Covid cases – to lockdown or not?

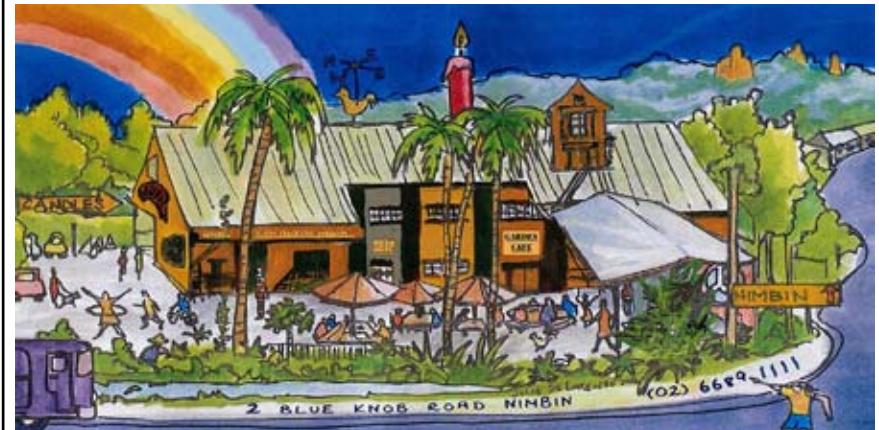
There have now been five Covid cases reported among residents of Northern NSW Local Health District this week, with Tweed and Byron shires having just emerged from lockdown. The NSW Government planned to allow regional travel once NSW as a state hit 70% full vaccination. This has now been increased to allow regional travel at 80% full vaccination – buying our region crucial time to get more of our community protected through vaccination. Before this change, the level of protection for our regions was not considered as part of the roadmap out of the pandemic. New Covid exposure sites have been announced in Lismore, Kyogle, Ballina, Byron and Casino dating from 22nd September through to 28th September. Sites include Bunnings as

one of five venues in Lismore, 10 venues in Kyogle, three each in Casino and Tweed, two in Byron and one in Ballina. More details and updates can be found on the Northern NSW Local Health District website at: <https://nswlhd.health.nsw.gov.au/blog/2021> Anyone who has been to these venues at the times listed is considered a casual contact and must get tested and isolate until they get a negative result. A drive-through clinic will be open in Kyogle at the Kyogle Visitor Information Centre, Cnr Summerland Way and Anzac Drive. Open from 9am to 3pm, no appointments required. Find a testing clinic near you at: www.nsw.gov.au/covid-19/health-and-wellbeing/clinics Regional restrictions still apply: www.nsw.gov.au/covid-19/rules/affected-regions

Queensland border Northern Rivers LGAs including Lismore, Kyogle, Ballina, Tweed, Byron and Richmond Valley are now part of the non-restricted border zone. Travel for essential work and essential purposes, between Queensland and our Local Government Areas in the NSW border zone is allowed. Essential work means any work or volunteering that cannot be reasonably done from home. People crossing the border for essential work will need to have received at least one dose of the Covid-19 vaccine. Essential purposes include attending school and receiving medical care. Travel across the border for recreation or social visits is not permitted. To enter Queensland from an LGA within the border zone you must:

- complete a Queensland entry pass;
- get tested if you develop any COVID-19 symptoms after arriving in Queensland;
- monitor the list of interstate exposure venues daily (at least once every 24 hours) from the time you complete a declaration and for 14 days after arriving in Queensland; and
- comply with face mask requirements.

When you receive your Queensland entry pass via email, you must read all instructions and be able to access it at all times (either in a printed version or on an electronic device). Queensland residents can enter the non-restricted New South Wales border zone for a variety of purposes and will not need to observe stay at home requirements when they return to Queensland.




Nimbin Bush Theatre Cafe
Now Serving Breakfast
Open 7 days 9am-3pm
Phone 6689 1111

I love working with our community to make a difference.

GETTING THINGS DONE

Janelle Saffin MP
MEMBER FOR LISMORE
55 Carrington Street (PO BOX 52), Lismore NSW 2480
jismore@parliament.nsw.gov.au
02 6621 3626 | www.janellesaffin.com.au
janelle.saffin | janelle.saffin.mpp
Please call or email for information and support.



Nimbin Village Laundry

Brighten Your Day



Contact Maria Batistatou 0431 576 255
nimbinvillagelaundry@yahoo.com 45 Cullen St, Nimbin

I PAINT HOUSES

NIMBIN & SURROUNDS



RING BEN'S PAINTING:
0409 352 102



Our friendly team is skilled in servicing, supporting, & supplying Apple products.

65 Magellan St Lismore NSW 2480
www.powermaxcomputers.com.au
(02) 6622 4996

Apple Authorised Reseller Authorised Service Provider



Tired of paying high energy prices?



HARDY ELECTRICAL & SOLAR
YOUR LOCAL SOLAR SPECIALIST!

1300 748 948
Call Now, Go Solar! hardysolar.com.au

Dig and Move Nimbin

- 1.6t excavator, 900mm access
- 3t capacity tipper
- Drain clearing
- Green waste removed

Phone 0477-809-783
digandmovenimbin@yahoo.com



John Adams*
& ASSOCIATES

**a.k.a. Sindhu*

Lawyers
0435-651-581

 **Nimbin Plumbing & Gas**
Lic. No. L5971

Supply – Installation – Service – Roofing

Ashley Knights

Phone 0414-664-664

 **POOH SOLUTIONS**
Waste Water Services

Council and pre-purchase septic reports
Thunderloo, Clivus Multrum
and Nature Loo compost toilets
Best practice septic installation service
Maintenance and repairs

0427 897 496 www.poohsolutions.com

 **Did you know?**
All our links are clickable in the web edition.
Visit www.nimbingoodtimes.com and click away!

NIMBIN BUILDING MATERIALS

OPEN Mon-Fri 8am-4pm
Saturday 8am-12 noon.
50 Gungah Road Nimbin NSW 2480
Ph: 6689-1206
A/H Ralph Mob: 0429-048-808

For a broad range of new and new seconds at very competitive prices

Hardwood	Poly Pipe & Fittings
Decking & Flooring	Structural Steel
Pine Framing	Sand & Gravel
Roofing & Guttering	Cement
Doors & Windows	Plumbing
Cement Sheeting	Stock Feed
Architrave	Granite & Marble
Plywood	Gardening & Plants
LVL's/Smart Beams	Elgas Supplier
Hardware	Geohex Supplier

Delivery Available
sales@nimbinbuildingmaterials.com.au
www.nimbinbuildingmaterials.com.au

Covid claims local newspaper

The free weekly local paper, the *Richmond River Independent*, has ceased being published and distributed across the Casino and Kyogle LGAs after 63 issues.

The latest Covid lockdown, “knocked the stuffing out of businesses across the region” which “pushed the *Independent* into losses we can’t sustain”, the paper reported in its last 24-page edition under the headline, ‘Paper put on pandemic pause’.

“Right now, the lockdown and its aftermath have shut us down.”

But the publication may yet rise from the ashes, as the Richmond River Independent Community Association that published the paper soldiers on, and “that’s a structure that could work again in better circumstances,” president Bob Mills wrote in the final edition of the widely-loved local rag.



Meanwhile, multi-skilled editor/reporter/photographer Susanna Freymark will continue publishing local news online under the banner of *IndyNR.com*

“The NR is for Northern Rivers,” Susanna told readers in her final column.

“My focus will continue to be on Kyogle and Richmond Valley LGAs and around their edges... It’s a new adventure. A different dream,” Susanna wrote.

“The stories I tell about you make up a mosaic of the community I’ve grown to love,” she wrote.

NGT wishes Susanna well in her new endeavour and we hope to see the *Independent* return, because the more local independent media outlets on offer, the better informed our community will be on important local issues.

The plot to kill Julian Assange

by John Jiggins

In April 2017, CIA director Mike Pompeo declared that it was time to call out Wikileaks, describing it as “a non-state hostile Intelligence service, often abetted by state actors like Russia,” and said that WikiLeaks would be ended.

Julian Assange responded to Pompeo’s threat in an interview with Jeremy Scahill on his podcast Intercept.

“Pompeo has stated that this is the end of Wikileaks and its publications. So how does he propose to conduct this ending? He didn’t say, but the CIA is only in the business of collecting information, kidnapping people, and assassinating people. So it’s quite a menacing statement that he does need to clarify.”

In a powerful piece of investigative journalism this week, Yahoo News revealed that Julian Assange’s suspicions were right. Pompeo’s speech marked an intensification of the war on WikiLeaks. The CIA had begun planning to either kidnap Julian Assange from the Ecuadorian Embassy or to assassinate the Australian publisher.

The Yahoo! team’s investigation was based on conversations with 30 former US officials. Among those interviewed, eight provided details on plans to kidnap Assange. They said Assange had become an obsession for the CIA and its director Mike Pompeo. The Yahoo team quoted one associate who said that, “Pompeo was completely detached from reality and was seeing blood.”

Greg Barns SC, a barrister and advisor to Julian Assange, told Bay-FM that the CIA was angry over the leak about the CIA’s secret computer hacking tools, known as Vault 7:

“Essentially, this was after the publication by WikiLeaks, called Vault 7,



which is a highly classified document of the CIA that is a how-to manual if you like, and provides a lot of detailed information about how the CIA goes about its very darkest operations.

“Once it was published, it created a storm. What was already a hostile climate became intense, a collective hatred for Assange in the CIA, which built on top of the already hostile climate WikiLeaks faced in Washington generally.”

Mike Pompeo, who was the CIA director then and would later become Secretary of State under Trump, became party to a scheme, which was essentially to kidnap or kill Assange. The CIA hatched a number of extraordinary plans, which were knocked back as too dangerous and likely to endanger US legal moves.

In the paranoid manner of spooks, the CIA next became extremely afraid that Russian intelligence would carry out what they had planned: to kidnap Assange from

the embassy and fly him to Russia. If this eventuated, they planned to stop the Russians by a sort of road rage incident of ramming the Russian car, or by having a helicopter hover over the Russian plane on the tarmac, preventing it from taking off. They even war-gamed a shoot-out with the Russians in the streets of London!

“It was like something out of a James Bond film,” said Greg Barns, “except sadly, it was very true. There was a clear plan to take Assange out. We now have the Australian Government on notice that one of its citizens was the subject of a conspiracy to murder plot by the CIA.

“No Australian government should sit on its hands and do nothing in those circumstances. We’ve seen in the last week the cuddling up by Australia to Washington with Washington saying they have no better ally than Australia. If that’s the case, they ought to be protecting this Australian citizen.

“The conduct of the CIA was outrageous, unlawful, and represents a complete breach of the so-called alliance or friendship between Australia and the United States.”

The Yahoo report confirms long held suspicions about surveillance of Wikileaks activists and Assange’s lawyers.

Said Greg Barns: “There’s no doubt that there’s been long standing surveillance of those of us who’ve been supporting Assange, and those of us who have been to the Ecuadorian embassy, including myself.

“We had reports in relation to his partner Stella that spies were rummaging through the rubbish bin, looking for the nappies of one of their children to determine if Julian was the father: extraordinary and illegal surveillance not only on Assange, but anyone who came near him, and including the illegal surveillance of meetings, including meetings with his lawyers.

“The CIA acts essentially as a criminal enterprise. It is state sanctioned criminality. To be overtly planning to murder someone in any circumstances would amount to a conspiracy to murder for anyone else and the persons would face very serious criminal charges.”

The hearing for the US appeal against the UK decision not to extradite Assange is due on the 27th and 28th October. Although two days are allocated, it may run longer as the US wants to examine the psychologist whose evidence on Assange they want to challenge.

Another issue will be how long it takes before the court of appeal hands down its decision. That could be anywhere from three weeks to a few months.

And so the question is whether or not we’ll know the result before the end of the year.

Destroying rainforest to flush toilets

by Nan Nicholson

How should rainforest that is millions of years old be compared with the need to flush one's toilet?

Only 2% of tap water is used for drinking and cooking. The rest is used for purposes that do not require high quality drinking water, like toilet-flushing.

The 62 ha of rainforest in the Dunoon Dam (DuD) area makes up 6% of the remaining 1% of the formerly vast Big Scrub rainforest. Some of it is regrowth, and some of it is pristine. The Channon Gorge contains 7ha of an extremely rare forest type in this region: warm-temperate rainforest on sandstone.

Of this, 6 ha would be destroyed, according to the *Dunoon Dam Terrestrial Ecology Impact Assessment*, Nov 2011. This unusual rainforest is in exceptionally good condition and contains the largest recorded water gums (*Tristaniopsis laurina*)



in NSW.

The DuD has been voted off the table three times by a majority of the Rous

County Councillors. Rous has now submitted its Integrated Water Cycle Management Plan,

excluding the DuD, to the Dept of Planning, Industry and Environment for approval. It is likely to be accepted.

However, some local politicians, or would-be politicians, are still agitating for the DuD. They appear to be less interested in water security than in manufacturing a political campaign around a single issue that allows for simple slogans (eg "toilet-to-tap"). Fortunately, no social movement in favour of the DuD has emerged, apart from a handful of Facebook trolls.

Destroying internationally significant rainforest to supply drinking-quality water for low-quality purposes can never be ethical, rational or acceptable to the community. The local community, which would be the most seriously affected, has a proud history of protecting nature and it will fight for this forest too.

Dam would increase flood risk

The proposed Dunoon Dam could not provide flood mitigation for Lismore, according to the WATER Northern Rivers Alliance.

"While floods would not be reduced in Lismore, they could actually increase in the 3km immediately downstream of the proposed dam," spokesperson for the Alliance, Jally Hawthorn said.

"The combined catchment of Rocky Creek Dam and the Dunoon Dam is 50km². This is only 3.6% of the 1400km² total catchment of the streams which combine to flood Lismore.

"Even if both dams were completely empty at the onset of heavy rain, they would withhold only about 3.6% of the floodwaters heading for Lismore. Most extreme rain events occur during wet periods when dams are more likely to be at a high level or already full. They could do nothing to hold water back.

"Flooding effects are complex and influenced by such factors as the downstream conveyance capacity of the river and the rainfall intensity in the catchment. Exact levels can't be predicted, but it is clear that the Dunoon Dam would do virtually nothing to help Lismore.

"In fact, a big new dam may worsen flooding in the first 3km downstream during extreme rain events, according to modelling done by Rous County Council in its Environmental Flows Assessment.

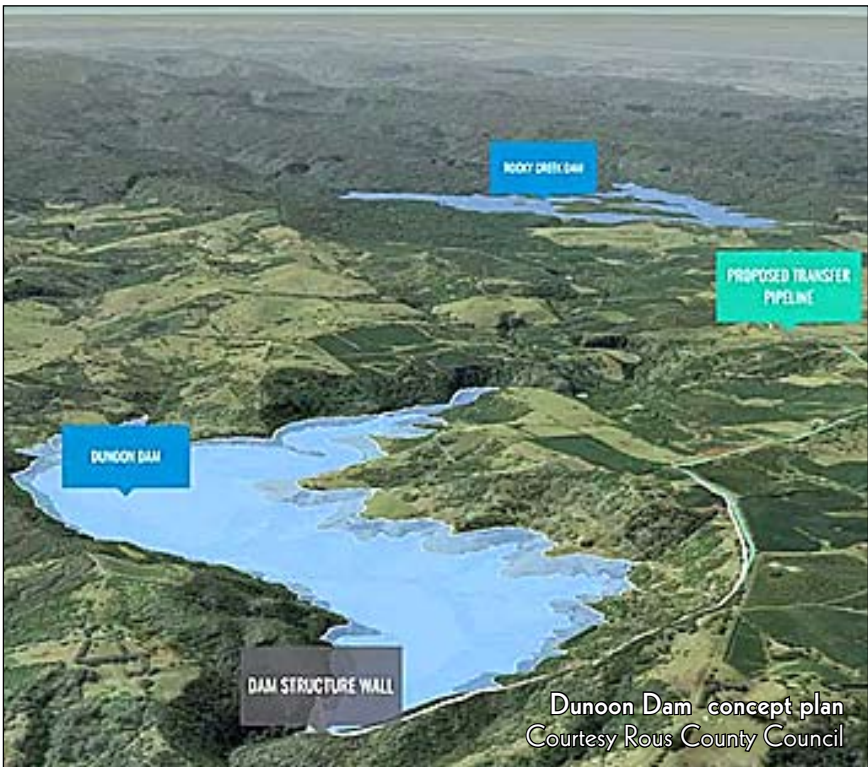
"The surface of an overspilling dam is impervious to rain, much the same as a roof. Any rain falling on it immediately flows downstream instead of taking time to run down through the landscape.

"This well-known phenomenon creates a large peak discharge which is greater than if no dam were in place. The modelling suggests that the estimated natural flood peak of 17,280 ML/day could increase by 3,176 ML/day (18.4%) with the Dunoon Dam operating. This would create a critical danger for those living in that zone.

"This is just modelling, but the risk cannot be ignored, especially because extreme weather is expected to increase in frequency and severity. It is yet another reason that the Dunoon Dam



Lismore flooding in 2019
Courtesy ABC News



Dunoon Dam concept plan
Courtesy Rous County Council

is an unsafe option and should never be built."

"WATER Northern Rivers Alliance believes that all discussions about the

proposed dam should include warnings of the consequences for downstream residents and farmers in extreme flooding," Ms Hawthorn said.

mi~DRIVER

Imax people-mover, up to 7 pax. Fully insured.

AFFORDABLE RATES



Bookings 0402-831-151
privatedriver@email.com www.miprivatedriver.com

Nimbin Market

4th, 5th Sundays

Handcrafted, Retro, Recycled, Fair trade, Locally made, Pop-up Art Gallery, Workshops, Music, Fashion, Food, & Family Fun! 8am- 3pm nimbinmarkets@gmail.com



Next Market

10th October
9am – 3pm

We send our love to the universe. We are all challenged with change.


When permitted, the market will operate under Covid-Safe restrictions.

Enquiries: 6688-6433



BLUE KNOB COMMUNITY MARKET

SATURDAYS 8.30 - 12PM
BLUE KNOB HALL



Nimbin Farmer's Market

Wednesdays 3 - 6 pm



NIMBIN ORGANIC Food Co-op

Fresh Certified Organic & Local Spray Free Produce

Organic Groceries, Treats & Speciality Foods

Member & Volunteer Discounts
Great Value in Organics

TRIBAL MAGIC

Alternative Department Store

NEW STOCK ALWAYS ARRIVING



Come and see what the Nimbin Spirit has created
74 Cullen St, Nimbin. Open: 10am - 6.30pm

Johnny Mc Towing

Lic No. 10004

Any Old Cars
Caravans



Any Old Metals
Batteries

Ph: 66897 322 Mob: 042 99 44 571

SPECIALISING IN UNWANTED CARS

Nimbin Bakery

52 Cullen Street

- Nimbin's own Aquarius Loaf baked fresh daily
- Sourdough bread and rolls including white
- A range of spelt breads baked daily
- Huge range of pies and pastries, including vegetarian varieties
- Salad rolls, sandwiches and hamburgers made fresh all day
- Quality Botero coffee served all day, every day
- Loads of cakes, slices and treats
- Order your birthday and special occasion cakes

OPEN MONDAY-SATURDAY at 6am

Phone 6689 1769

Mr BOBCAT

6689 0044
0427 946 823

- 4-in-1 bucket • trencher • auger • excavator
- 5 tonne spreader • 8 tonne tipper

Terry Bresington

PLASTERIN' NIMBIN'

0427 891626

**Gyprock walls and ceilings
New work or renovations**

Lic. No. 100169C

NIMBIN DELICIOUS

Jams & Chutneys

In your neighbourhood...

Nimbin Neighbourhood and Information Centre News

NNIC Services

Our services are operating as usual with additional Covid safety protocols in place to keep you safe. Masks are required for entry.

If you need NNIC services and support but you are either: in isolation, or feeling unwell, or feeling nervous and wanting to maintain physical distancing, then you can phone us on 6689-1692 and we can arrange a telephone appointment for you so you do not have to come in personally.

Nimbin Resilience Family Fun Day

This will be a virtual event on 13th November.

We were trying for the Nimbin Show in September and then for the 16th October at the school, but alas both events have been forced to be cancelled due to Covid restriction issues.

But not to be defeated and to ensure as much inclusion as possible, we are moving this event on-line. This will at least enable all families to participate – no matter your vaccination status – as long as you have access to a reasonable internet connection.

There will be a range of fun activities throughout the day that you can join in on. Show bags for the kids with lots of goodies including any materials needed to participate in the workshops on the 13th will be available to collect from NNIC in the two weeks prior to the event.

Watch out for more info on Hook Ups, the NNIC website and facebook page and the next edition of the NGT.

7 Sibley Street update

We are excited to report we have conquered the

Development Application process and are ready to start work on site.

The project will enable us to publicly showcase hempcrete and the remarkable sustainable building material that it is.

The DA process sucked more cash out of us than we had expected, and as a result we are still a little short of funds to complete the project.

A local donor has pledged \$1000 if we can all match this generous offer and raise another \$1000. So if we can raise \$1000 that will turn into \$2000. Like magic! Donations can be dropped into NNIC or made into the NNIC Sibley St account at Summerland Credit Union account: BSB: 728 728, Account Number: 22304372. Key three letters for the target account: NIM

Please email us at: admin@nnic.org.au with your details so we can acknowledge your donation and also put your name (unless you prefer to remain anonymous) and the word LOO in the reference of any bank deposit.

Note that the Sibley Street project is outside the scope of our charitable status, and unlike donations to NNIC generally, are NOT tax deductible.

New and exciting survey

Okay, so that may be overselling it a teeny bit, but we really need Nimbinites to do this survey if you can.

Neighbourhood Centres across NSW have for some time been concerned that the data we are asked to collect by our funders does not reflect the work we do in our communities, and does not in any way measure community well-being.

We have collectively

developed this trial survey as a means of measuring what is important to us and our communities.

NNIC is now launching this survey into Nimbin and we are inviting anyone who is part of the Nimbin catchment and sees themselves as a Nimbinite to participate.

So that we can easily distinguish our local data from that collected across NSW (and tell you what you all said) PLEASE use the word "Nimbin" in your location and also nominate Nimbin Neighbourhood Centre (or NNIC for short) as the agency which provided the survey to you.

If you only do one survey this year... have a go at this one. If only these sorts of questions were asked in the Census! The survey is available via the following link: www.surveymonkey.com/r/57BLVGL

Alternatively, hard copies

can be provided at NNIC.

Minimise bushfire risks

The bushfire season is now upon us and it is essential we all take care, stay alert to our environment and be as prepared as possible to minimise the risks to us all.

To find many useful links and phone numbers all in one place see the Nimbin Disaster Page on the NNIC website: <http://nnic.org.au/pub/index.php/disasters>

FREE Covid PPE gear

Packs of disposable masks, sanitising wipes plus hand sanitiser available FREE to Nimbin community members and community groups.

Pick up at NNIC 10am to 1pm weekdays. Courtesy of Lismore City Council.

www.nnic.org.au
www.facebook.com/pages/Nimbin-Neighbourhood-and-Information-Centre

Nimbin Aged Care and Respite Services

Based at the Bottlebrush Studio, Nimbin Community Centre



SOCIAL CENTRE – Monday-Friday 10am-2pm, drop in for a cuppa, computers, help to access support services and information.

DEVICE ADVICE – Wednesdays 10am-12.30pm, assisting seniors with phone, tablet or laptop issues, book a slot

SENIORS SOCIAL GROUPS – booking and fees apply

- Nimbin Tuesday Social Group, 10.30am-1pm. Morning tea, conversation, music and light lunch
- The Channon Seekers and Sages 3rd Thursday, 11am-2pm
- The Outsiders Group 1st and 3rd Thursday, 11am-2pm
- Wise Ones at Koonorigan Hall 4th Monday, 11.30am-1.30pm

BUS OUTINGS – 2nd Tuesday, scenic drives, cafes for morning tea & lunch, booking essential, fees apply.

All NACRS support workers are qualified, certified, experienced, police checked, Covid-Safe trained, insured and locally based.

To find out more, phone 6689-1709.

Nimbin Hospital information

Child immunisation clinic

For 0-5 year olds, held on second Tuesday of the month. Next clinic: 12th October. Phone 6620-7687 (Lismore Community Health Centre)

Early childhood nurse

Every Tuesday. Baby checks, weighs, post-natal support. For appointments phone 6620-7687.

Women's health nurse services

Third Thursday of the month, next is 21st October. Confidential service, checks, advice, general health information. Phone 6689-1400 for appointment.

Wound clinic

Monday, Wednesday and Friday from 8am. For self-referral, phone 6689-1288. Referrals also from Nimbin Hospital and GP clinic.

Drug and alcohol counselling services available

For an appointment, please contact 6620-7600. A trained professional will ask you a few confidential questions and will provide you with an appointment time.

Nurse practitioner clinics

- Respiratory clinic: second Tuesday of the month, next will be on 12th October. Phone 6630-0488 for appointments.
- Diabetes clinics: third Thursday of the month, next is 21st October.

Community Registered Nurses

Monday to Friday, 8am-4.30pm. Assessments, wound care, referrals, advocacy, provision of palliative care in the home, medication support. Phone 6689-1288 – leave a message, will return call swiftly.

Nimbin NSP

Needle and Syringe Program open Monday to Thursday. Arrangements can be made to see a Community Registered Nurse.

Health advice line

Phone 1800-022-222 if you have a health issue. 24-hour, seven days a week free service. A Registered Nurse will assess whether you need to go to an Emergency Department.

Nimbin Hospital Auxiliary

Monthly meetings are held on the 1st Wednesday of the month, 9.30am in the CWA room. New members are most welcome.





NIMBIN

ENVIRONMENT NEWS
CENTRE

by Scott Sledge, president

Extinctions

Recent media reminds us that a large percentage of animals have died because of human activity and natural disasters.

The koala population in NSW is estimated to have declined by 30 to 50% during the last three years, and native species of all types are threatened with extinction in some areas. Key causes are fires, road kill, domestic dogs and cats, and land clearing.

In our region, fire is becoming a real threat. We have had good rains this year but only a few sprinkles in the past six weeks. Please be ultra careful and do not leave any fire unattended, and remember that fire permits are now required. Please contact local Bushfire Brigades for advice.

Firestorms are obvious threats to our wildlife, but native species are also quietly but steadily being eliminated by dogs and cats. I am reliably informed that even well-fed pet cats will hunt and kill on average 115 native prey animals every year. Genomic testing has revealed that few large predators are in fact dingoes, but are dogs, both domestic pets let to roam and those that have gone feral.

According to NSW Minister for Environment and Energy Matt Kean, a new program called *Keeping Cats Safe at Home* has been launched that will engage veterinarians, companion animal groups, cat owners, and wildlife groups through local government.

Under this initiative, RSPCA NSW will engage 10 urban and regional councils across the state, providing education and advice for communities on the importance of containing their cats safely at home.

Of the 10 councils involved in the program, three are in the Northern Rivers: Byron, Tweed and Kyogle.

Good as this is, why have local councils been slow to implement Koala Plans of Management? There are now few restrictions on land clearing, with some misguided people advocating land clearing as a means of bushfire control.

Exiting from coal

While the Australian government is touting its conversion to control of climate-damaging practices, and a multi-party NSW Upper House committee is calling for a co-ordinated exit from coal, politicians are still calling for public money to continue to subsidise fossil fuel extraction.

But biomass burning is not the answer. Sweetmans, a company that claims to



Protection of koalas demonstration in Bangalow

be “renewable”, plans to export native trees from state forests in the form of wood chips from the Port of Newcastle – a move that has been slammed by the Nature Conservation Council of NSW.

The NSW parliamentary inquiry into “Sustainability of Energy Supply and Resources in NSW” has recommended that native forest biomass not be allowed in energy generation facilities and not be eligible for Renewable Energy Credits. The challenge now is to get Government to accept the recommendations.

Legal actions

First, the North East Forest Alliance (NEFA) has called on government to stop logging native forests on public land.

Next, we have started action by the Environmental Defenders Office (EDO) to overturn the extension, for another 20 years, of Regional Forests Agreements (RFAs) that guarantee wood supply from logging—indefinitely, without any ecological assessments.

Third, the Bylong Valley Protection Alliance, EDO clients, have just scored another incredible legal victory in their fight to protect their lovely valley against a destructive and climate-wrecking coal mine, this time in the NSW Court of Appeal. The court upheld a landmark decision to refuse the Bylong Coal Project. It's the latest crucial win in a long legal fight that saw the project refused back in 2019, and then again late last year.

Fourth, the Redbank/Verdant DA to replace burning coal with burning 1.3 million tonnes of wood and forest “waste” was rejected by Singleton Council, so the company is going to the Land and Environment Court.

To submit comments opposing the biomass-burning Redbank Power

Station, see the NEFA guidelines here: <https://bit.ly/3UraZ3> and the BAG guidelines here: <https://bit.ly/3o7cWXp>

We can ride together

The proposal to remove train tracks from the Tweed Shire could be modified to allow a cycle/walking track to share the corridor with future public transport. It is possible that the corridor may be saved and its use decided following the Tweed Council election in December.

Northern Rivers Rail Ltd aims to take legal action to stop the demolition of the tracks due to lack of consultation and consent by the community, and is asking for public support and donations to take the matter to court.

You can make a donation through PayPal or credit card at: www.northernriversrail.com.au or by direct deposit to their account at Summerland Credit Union (BSB 728 728, Acc 22330962).

Contact the group at: admin@northernriversrail.com.au or by phone at 0423-030-346 (Beth Shelley) or 0422-007-724 (Lydia Kindred), or on their Facebook Page.

Federal elections

The next Federal election (by May 2022) is a powerful opportunity to change everything for the better. Should Greens and independents achieve a balance of power, we could have more hope for peaceful, healthier decisions.

The rot must stop. Surely humanity can see truth in the old adage “the love of money is the root of all evil.”

We don't want to continue colonial-era exploitation. We do want a society that cares for its people, builds a sustainable future that reduces climate crises, and appreciates this marvellous planet. Space tourism is not the answer either.

Nimbin Community Centre

by Teresa Biscoe,
co-ordinator

The lockdowns have continued to disrupt our activities and groups using the Community Centre casual hire spaces, with markets, classes and meetings cancelled during this period.

Hopefully we can move forward with more certainty as we approach the end of the year and the summer holiday season.

Aquarius Park update

The Nimbin Community Centre would like to thank the various community organisations, businesses and individuals for their generous donations towards the purchase of the property at 11a Alternative Way. The Community Centre would not have been able to manage this project without the support of our local community.

Anyone else who wishes to donate to this great community project can deposit funds into our designated account: Summerland Credit Union BSB 728728; Nimbin Community Centre Project A account 22269890, or go to our website: www.nimbincommunity.org.au and find the donate link.

Boundary adjustment

We are currently engaged in a DA process with Council to undertake a subdivision and boundary adjustment with Rainbow Power Company who contributed just under half of the purchase costs on the understanding that a boundary adjustment would occur to allow them to expand their light industrial zone.

Rainbow Road Walking Trail

As you know, the Lismore Council has received funding to develop and build stage one of the Rainbow Road Walking Track Project and our park site is a vital part of this stage one plan.

The council is currently in the process of appointing a Project Officer to manage the project and NCC is discussing arrangements for the Aquarius Park site and the project

with them.

We have also started consulting and getting quotes for removal of noxious weeds, maintenance and bush regeneration on the site as the start date for the work is still a while away.

Aquarius Park Landcare group

As part of managing the on-going development and maintenance of the site we have registered with Landcare NSW to start a Landcare Group.

This will give the NCCI access to networking, training and funding to help us manage, develop and maintain this site.

If you are interested in joining this group or hearing about community days and Landcare work days, please let us know by email: ncci@nimbincommunity.org.au



A visitor to the park

Wai-bal Culture Centre, Pay the Rent

At the moment the Wai-bal Centre is going through a transition and the old account has been closed. They intend to get something organised very soon and will let people know as soon as they can. This community support is a vital part of keeping this space going, as they are an unfunded group.

We are inviting anyone from the community who wishes to support this very worthy cause to contribute it via our NCCI bank account 22269886, BSB 728728 and mark it “Pay the Rent” so we know who it is for.



NIMBIN'S SUSTAINABLE LIVING HUB

7 Sibley Street

October What's On!

\$10 unless otherwise noted

Bookings: text 0475-135-764 or email: sibley@nnic.org.au

Workshops (start 10.30am)

- Sat 9th: Simple Shoemaking** – make vegan slippers or ugg boots, materials provided, \$25
- Wed 13th & 27th: Spinning & textile weaving looms** – warping a loom
- Tues 19th: Knitting and crochet** – with Sue – darning
- Sat 23rd: Felting** – making a hat, \$35 materials included
- Tues 26th: Building with bamboo**

Community clothes swap

- Sun 24th** at Nimbin markets, email for more info.

Regular events

- Community Tools Library:** Wed and Sat, 10.30am – 2pm.
- Plant nursery:** Seedlings, cuttings, fruit and regen trees for sustainable gardens.
- 10-minute workshops:** Try hemp string making, stick spinning or loom weaving.



Shop 1, 66 Cullen Street

BRAIN TREE CLOTHING NOW IN STORE



FREE CAR BODY REMOVAL

LOCALLY MINDED

0439333910

